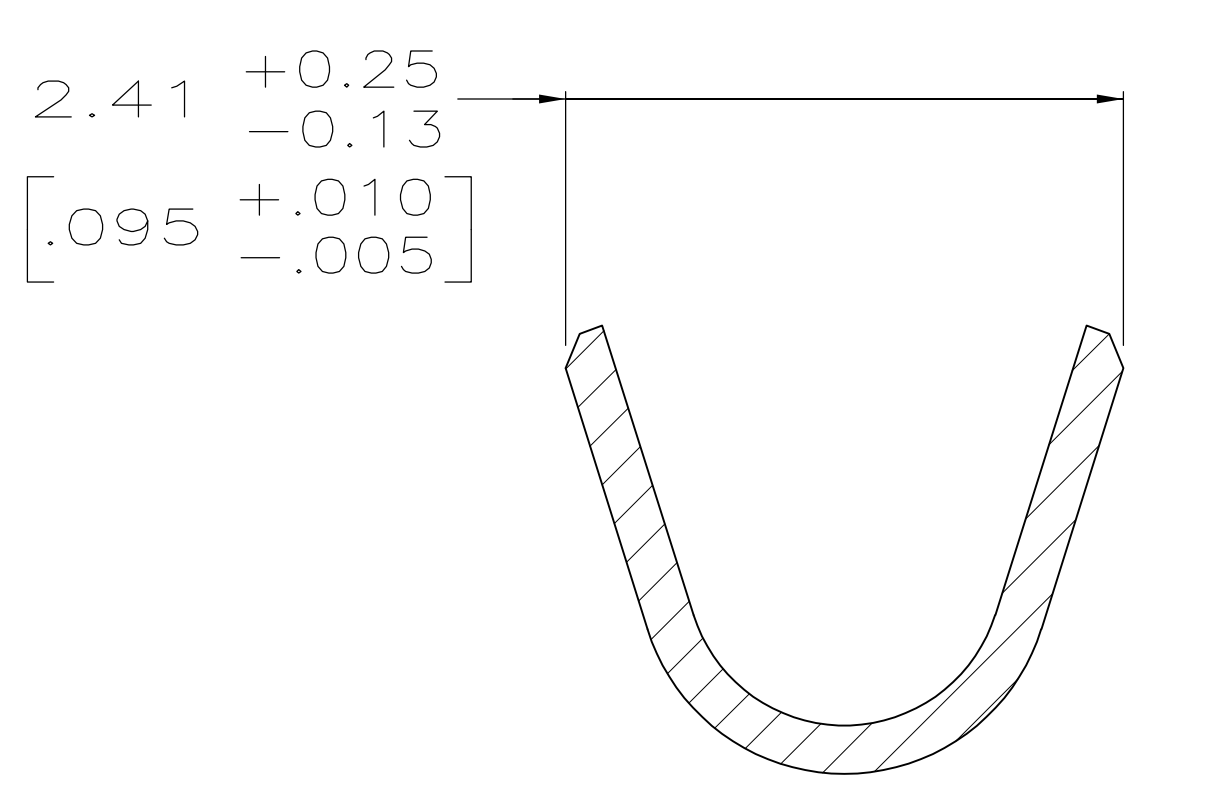
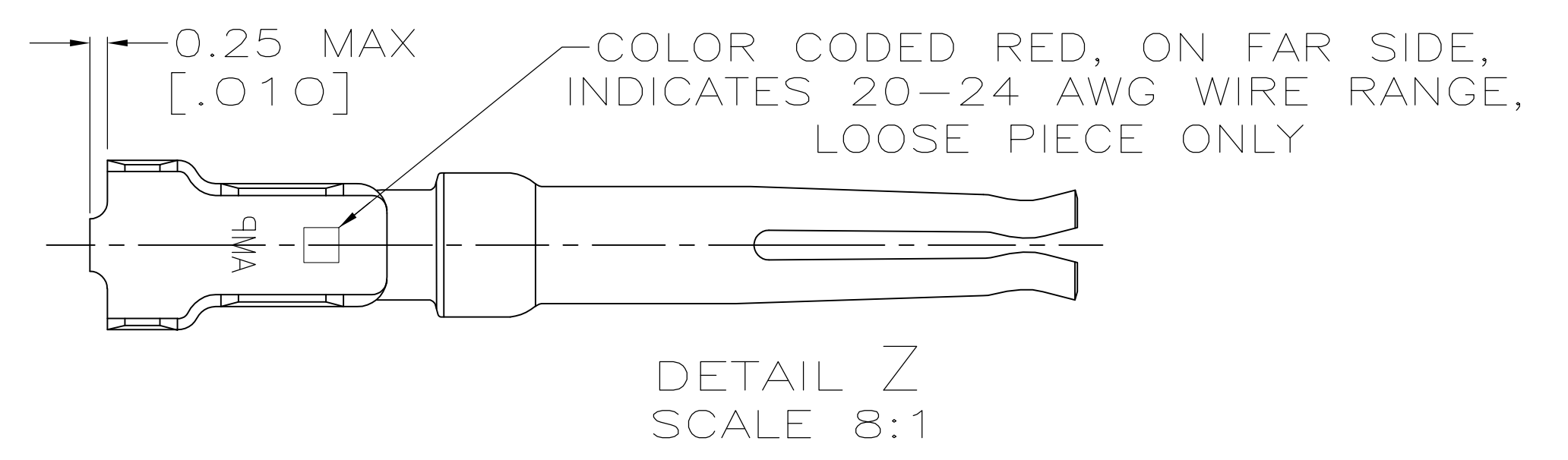
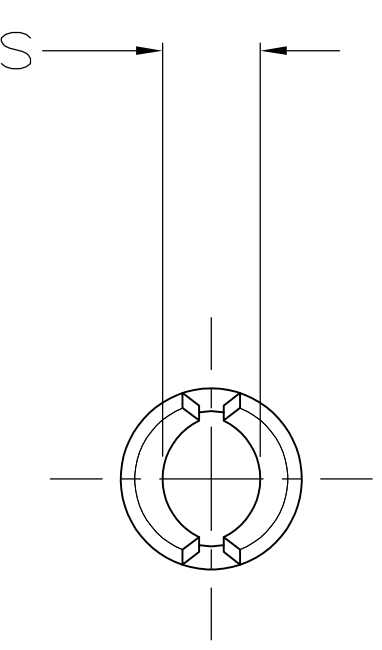
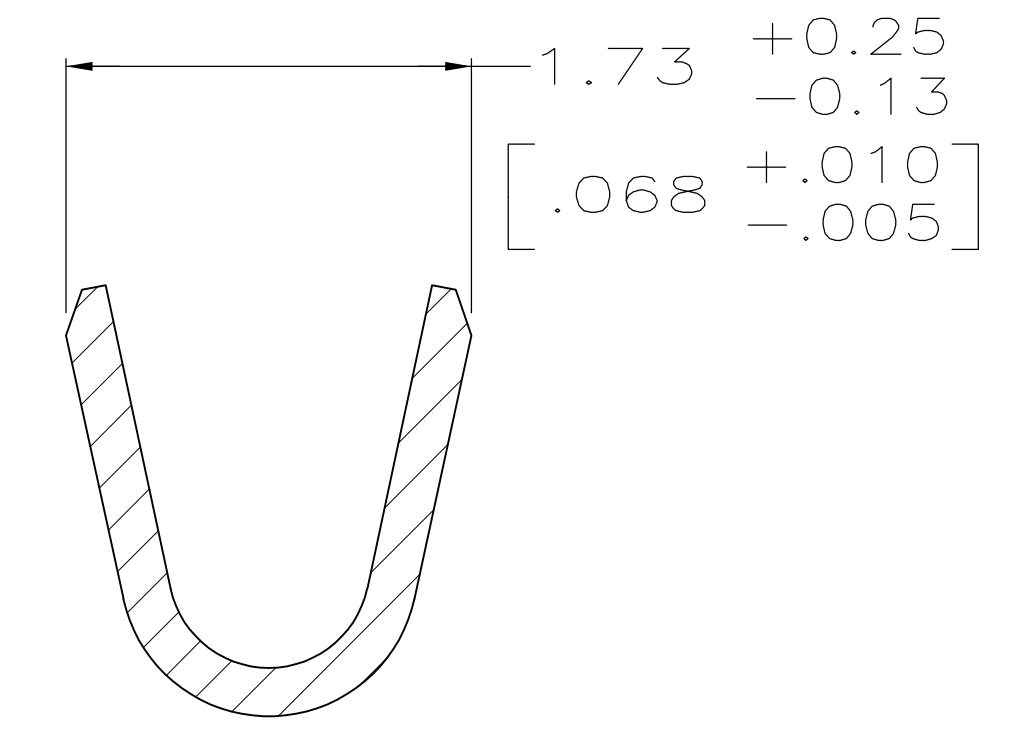


- 1 FOR MINI-APPLICATOR AND STRIPPER CRIMPER.
- 2 FOR HAND TOOL USE ONLY.
- 3. WIRE RANGE OF 20-24 AWG. INSULATION RANGE OF 1.27/1.52 [.050-.060].
- 4. TIN PLATING MAY NOT APPEAR ON CARRIER STRIP.
- 5 GOLD FLASH ON INSIDE OF LOCALIZED GOLD PLATE AREA, 2.54μm [.000100] TIN PLATED ON CRIMP BARRELS, ALL OVER 0.76μm [.000030] NICKEL UNDERPLATE.
- 6 PLATED WITH 0.76μm [.000030] GOLD ON INSIDE OF LOCALIZED GOLD PLATE AREA, 2.54μm [.000100] TIN ON CRIMP BARRELS, ALL OVER 1.27μm [.000050] NICKEL UNDERPLATE.  
-OR-  
GOLD FLASH OVER PALLADIUM-NICKEL, 0.76μm [.000030] TOTAL ON INSIDE OF LOCALIZED GOLD PLATE AREA, 2.54μm [.000100] TIN ON CRIMP BARRELS, ALL OVER 1.27μm [.000050] NICKEL UNDERPLATE.
- 7 GOLD FLASH ON INSIDE OF LOCALIZED GOLD PLATE AREA, 0.76μm [.000030] MIN TIN ON CRIMP BARRELS, ALL OVER 0.76μm [.000030] MIN NICKEL UNDERPLATE.
- 8 SPECIAL PACKAGING.



SECTION C-C  
SCALE 20:1  
INSULATION BARREL



SECTION B-B  
SCALE 20:1  
WIRE BARREL

| 6      | 1   | -            | 8           | 1658537-6 |
|--------|-----|--------------|-------------|-----------|
| 7      | 1   | -            |             | 1658537-5 |
| 6      | 2   | SEE DETAIL Z |             | 1658537-4 |
| 6      | 1   |              |             | 1658537-3 |
| 5      | 2   | SEE DETAIL Z |             | 1658537-2 |
| 5      | 1   | -            |             | 1658537-1 |
| FINISH | USE | LOOSE PIECE  | PART NUMBER |           |

THIS DRAWING IS A CONTROLLED DOCUMENT.

|                           |  |                            |                           |                               |                     |                  |                         |   |
|---------------------------|--|----------------------------|---------------------------|-------------------------------|---------------------|------------------|-------------------------|---|
| DIMENSIONS: mm [INCHES]   | TOLERANCES UNLESS OTHERWISE SPECIFIED: | DWG: G. ATTADIA - 01-10-05 | CHK: J. GERACE - 01-10-05 | APPRO: M. WALMSLEY - 01-10-05 | NAME: M. WALMSLEY   | DATE: 01-10-05   | TYCO ELECTRONICS        | Tyco Electronics Corporation<br>Harrisburg, PA 17105-3608 |
| 0 PLC ± -                 | 1 PLC ± -                              | 2 PLC ± 0.13 [.005]        | 3 PLC ± -                 | 4 PLC ± -                     | ANGLES ± -          | FINISH SEE TABLE | PRODUCT SPEC: 108-40005 | APPLICATION SPEC: 114-10000                               |
| MATERIAL: PHOSPHOR BRONZE | FINISH: SEE TABLE                      | WEIGHT: -                  | SIZE: A1                  | CAGE CODE: 00779              | DRAWING NO: 1658537 | RESTRICTED TO: - | CUSTOMER DRAWING        | SCALE: - SHEET: 1 OF 1 REV: D                             |